



MTSR'23



FAIR IMPLEMENTATION PROFILES FOR SOCIAL SCIENCE



AUTHORS



Angelica Maineri

Data manager
ODISSEI &
Erasmus University
Rotterdam



Tobias Kuhn

Assistant Professor
VU Amsterdam



Shuai Wang

FIP facilitator
Scientific engiener
VU Amsterdam



Navroop K. Singh

Bachelor student
VU Amsterdam

TABLE OF CONTENTS

- Introduction to FIP
- Related Work
- FIP for social science
- Communities
- Creating FIPs
- Analysis
- Conclusion and future work



FAIR IMPLEMENTATION PROFILE

Definition

A list of decisions made by a community to FAIRify their data

The FIP is a collection of FAIR implementation choices made by a community of practice for each of the FAIR Principles.

FIC

A group of people who are using/publishing data on the same topics

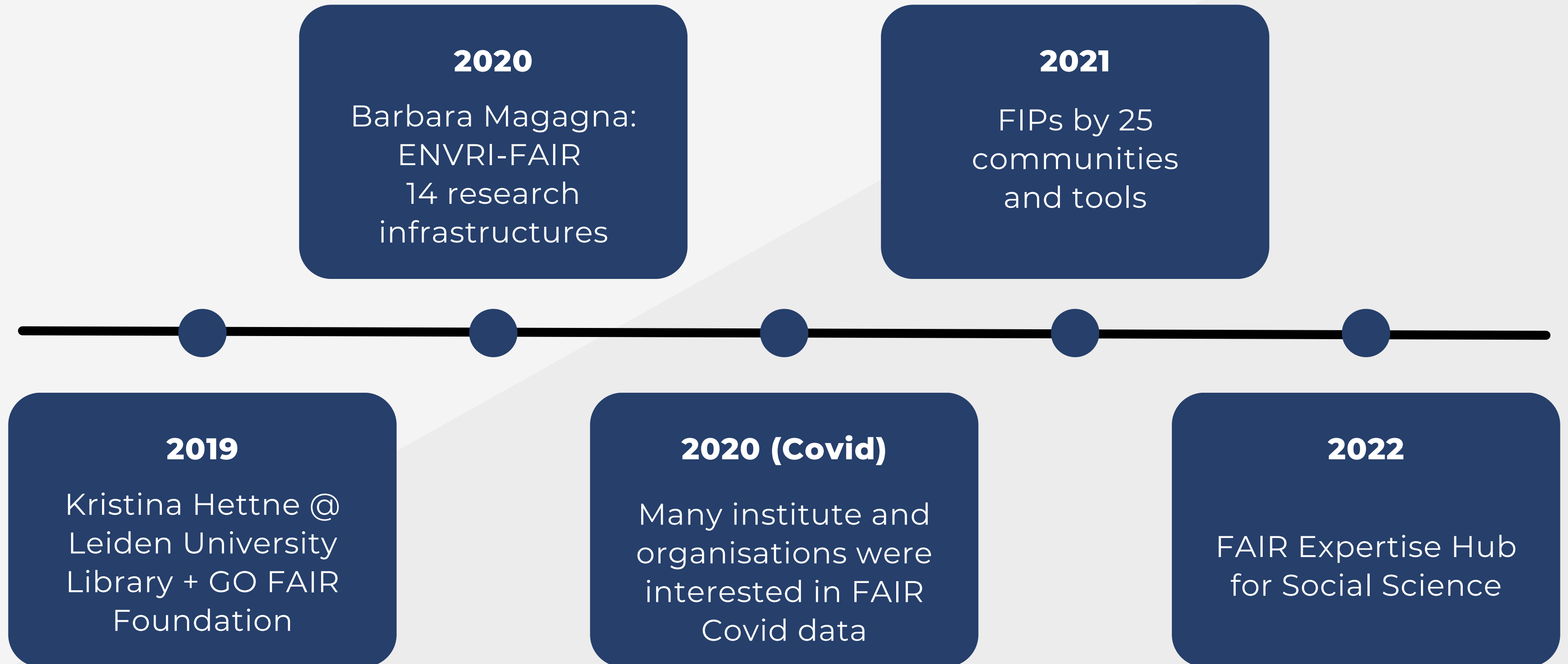
FER

A resource that enables the implementation of FAIR behaviors

Their relations

A FIC used a FER
A FIC is using a FER
A FIC will use a FER

A MINI HISTORY OF FIP



**VODAN
AFRICA**

HEALTH-RI

**ZONMW
COVID
PROGRAM**

**DUTCH
CANCER
FOUNDATION**

**DANISH
E-INFRASTRUCTURE
CORPORATION**

ENVRI-FAIR

**WORLD
FAIR**

**EOSC
NORDIC**

**NASEM
ROUNDTABLE ON
OPEN SCIENCE /
ORFG**

**NIAID / NIH
OFFICE OF
DATA
SCIENCE
STRATEGY**



FIPS FOR SOCIAL SCIENCE

- Two FIPs in WorldFAIR
- One FIP from past attempts
- Data in social science can be very different
- Qualitative data
- Different data management behaviors
- Less FAIR



COMMUNITIES

ESS

European Social
Survey (ESS)

AUSSI-ESS

Australian Social
Survey International –
European Social Survey

GESIS SSSR

GESIS Social
Science Survey
Research

SEH

SSHOC-NL Socio-
Economic History

MCAL

Media Content
Analysis Lab
scholars

LGBTQVoc

LGBTQ+ Linked
Open Vocabulary



Meetings

Processing

Review

Publish

CREATING FIPS

- Meetings/emails with members of the communities.
- All FIPs were created on the FIP Wizard
- Download in PDF and *.trig

The screenshot shows the 'LGBTQ+ Linked Open Vocabulary FIP' page in the FIP Wizard. The interface includes a navigation bar with 'Questionnaire', 'Metrics', 'Preview', 'Documents', and 'Settings'. Below the navigation bar, there are tabs for 'View', 'TODOs', 'Comments', and 'Version history'. The main content area is divided into two columns. The left column shows the 'Current Phase' as 'Defining FAIR Imple...' and a list of 'Chapters' from 'I. About' to 'VII. Register a new re...'. The right column contains the main content for the current phase, 'II.1 Select your FAIR Implementation Community'. This section includes instructions for selecting a community, a checkbox for 'Desirable: Defining FAIR Implementation Profile', and a text box containing the URL 'http://purl.org/np/RAOGUK-HzDHdTUPVG9tJXEjnG_p1mkqOyIWU10xf11_8#LGBTQVoc'. Below the text box, there is a 'Clear answer' button and a note that the answer was provided 3 months ago by Shuai Wang. The bottom of the screenshot shows the start of the next phase, 'II.2 Who is the Community Data Steward?', with instructions for providing an ORCID ID.



ANALYSIS

FAIR principles

FAIR Principle	SEH	MCAL	LGBTQVoc	SSSR	ESS	AUSSI-ESS
F4 Data	Dataverse, DANS data station (future use)	DANS SSH data station, Dataverse, OSF, Figshare, TriplyDB (future use)	SSH station, Data-verse, OSF, Figshare, TriplyDB (future use)	GESIS Search	ESS Data Portal, EOSC Portal	ADA Data-verse FER
A1.1 Meta-data	OAI-PMH, HTTPS, REST API	HTTPS, REST API	HTTPS, REST API	OAI-PMH	HTTPS, GraphQL API	HTTPS, REST API
I1 Data	OWL, RDF, RDFS, XMLS, HTML	-	JSON-LD, RDF, RDFS, N-Triples, Turtle, SKOS	-	Apache Parquet	SPSS, Stata, SAS, R, CSV
I2 Data	HISCO, AMCO, H-ICD, IDS	-	Homosaurus, QLIT, LCSH, ICDGT, RVM	-	ISO3166-1, ISO639-2, NACE Rev. 2, ISCO-08, NUTS 3, DDI Controlled vocabularies, CESSDA Vocabulary, ELSST	-
R1.1 Data	CC-BY-SA, CC-BY-NC	-	CC-BY-NC-ND 4.0	GESIS Usage Regulations 2018	CC-BY-NC-SA 4.0	-

Table 1. A comparison of decisions on the practice of the FAIR principle



ANALYSIS

FAIR Enabling
Resources and
Convergence
Analysis

FAIR Principle	FER	SEH	MCAL	LGBTQ	Voc	SSSR	ESS	AUSSSI- ESS
F1 Metadata	DOI	1	1	1		1	0	0
A1.1 Metadata	OAI-PMH	1	0	0		1	0	0
A1.1 Metadata	REST API	1	1	1		0	0	1
F2 & R1.2 Data	DDI-Codebook	1	0	0		1	1	1
I1 Metadata/Data	RDF	1	0	1		0	0	0

Table 2. Selected rows in the FAIR Convergence Matrix (1 indicates in use, 0 not)





ANALYSIS

FIP Similarity
analysis

FER	SEH	MCAL	LGBTQVoc	SSSR	ESS
MCAL	4,2,0,0 (6)	-	-	-	-
LGBTQVoc	2,2,4,0 (8)	1,2,0,0 (3)	-	-	-
SSSR	1,2,0,0 (3)	1,0,0,1 (2)	1,0,0,0 (1)	-	-
ESS	0,1,0,0 (1)	1,1,0,0 (2)	1,1,0,0 (2)	1,0,0,0 (1)	-
AUSSI-ESS	0,3,0,0 (3)	1,3,0,1 (5)	0,2,0,0 (2)	1,1,1,1 (4)	0,1,0,1 (2)

Table 3. Comparison of FERs across FICs (in each cell is the number of overlapping FERs between the FIPs for each aspect of F, A, I, R as well as their sum in parentheses; the color corresponds to the sum)





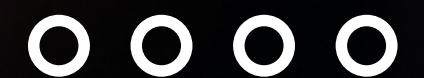
DISCUSSION

- The approach for the creation of the FIP for LGBTQVoc is not generalisable
- The FIP Wizard has limits in use: some FERs are not available
- FIP can evolve and the templates can also be changed Thus, some cost of maintainence.
- Giving advice based on the assessment results.



FUTURE WORK

- How FIPs in social science differ from other communities.
- How can we use FIP as suggestions for questions in DMPs.
- How FIPs can be automatically filled.
- What can FIP do to legacy datasets (datasets not in use).





THANK YOU

CONTACT



shuai.wang@vu.nl



www.fairexpertisehub.org

(under construction)



Platform Digitale Infrastructuur
Social Sciences & Humanities



ODISSEI



Clarariah



References

- Erik Schultes et al. “Reusable FAIR Implementation Profiles as Accelerators of FAIR Convergence”.
- Mark D Wilkinson et al. “The FAIR Guiding Principles for scientific data management and stewardship”. In: Scientific data 3.1 (2016), pp. 1–9
 - Barbara Magagna et al. “FIPs and Practice”. In: Research Ideas and Outcomes 8 (2022). doi: 10.3897/rio.8.e94451.
 - Hana Pergl Sustkova et al. “FAIR Convergence Matrix: Optimizing the Reuse of Existing FAIR-Related Resources”. In: Data Intelligence 2.1-2 (Jan. 2020), pp. 158–170. issn: 2641-435X
 - Kristina Hettne et al. “FIP2DMP: Linking data management plans with FAIR implementation profiles”.

References (useful links)

FAIR Implementation Profile: 3-part video series:

<https://www.go-fair.org/2021/08/02/fair-implementation-profile-3-part-video-series/>

WorldFAIR: <https://docs.google.com/presentation/d/1vDgMCWW-RM806RnDuI5ataGh4md5VX49u5NjcolVMU8/edit?usp=sharing>

FIP questionnaire and FER types: <https://bit.ly/WF-FIPs-Questions>

The FIP Wizard: <https://fip-wizard.ds-wizard.org/>